

How to Identify/Find CON-E-CO Plant Serial Numbers

Serial Number Layout:

1950s - 2007

C followed by four digits (C####)

Example: **C8383**

2007 – 2010

D followed by four digits (D####)

Example: **D0625**

2010 – Current Day

Five Digits (#####)

Example: **10302**

Small/Manufactured Parts:

Seven digits (#####)

Example: 2109920

*Note: Serial number may be followed by a dash and letter(s)

Examples: C8383-L, D0625-M, 10302-D

Where to Find Serial Number:

Note: Serial number is not on plates found on scales (NTEP or CPMB Plates)

On Serial Number Plate:

Located on the main frame of the base plant will be a serial number plate. (See Figure 1)



Figure 1

Continued....

On Piece Mark of Components:

Located on some small plant components are “Piece Marks”, these labels help identify the individual pieces of a plant. The plant serial number would generally be on the “Piece Mark”. In Figure 2 the plant serial number is 11091.

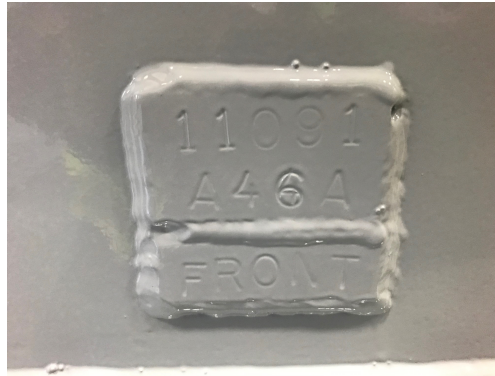


Figure 2

On Drawings:

Bottom right hand corner of drawings specific to that job the plant serial number will be part of that drawing number. Typical drawings this can be found on are erection, foundation, and electrical. (See Figure 3)

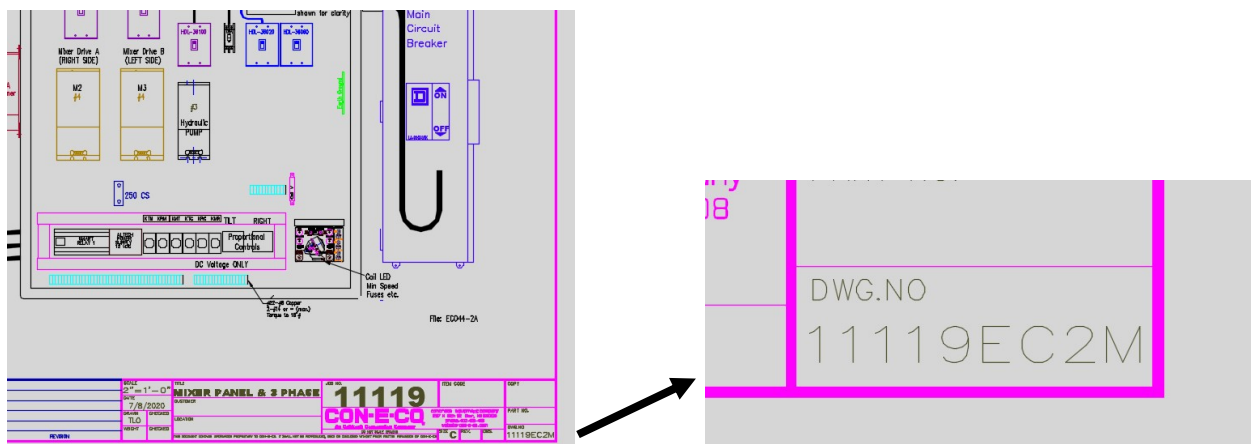


Figure 3